

65" Smart Interactive Display

MW3565-U-CE



Features

- 4K UHD anti-glare display delivers images with extreme detail.
- Ultra-narrow bezel design for perfect aesthetics.
- Dual Wi-Fi modules with both Wi-Fi and hotspot support for other mobile devices.
- High-precision infrared touch technology allows up to 50-point touch and 20-point write, realizing smooth co-authoring.
- Multiple utility buttons on the front panel such as power, volume control, settings, etc.
- A variety of quick tools such as annotation, screenshot, etc., with a floating window, improves usability and interaction efficiency.
- Wireless screen mirroring from various operating systems such as Android, iOS, and Windows to the display with one touch.
- Fast file transfer allows users to quickly transfer files to the display via a QR code.
- OTA remote upgrade allows the system to be upgraded online without backing up data.
- Optional 4K camera and microphone modules for immersive remote collaboration.
- A variety of front interfaces allow users to easily and quickly plug/unplug USB drives and other tools.
- OCR recognition. The whiteboard can automatically recognize text.

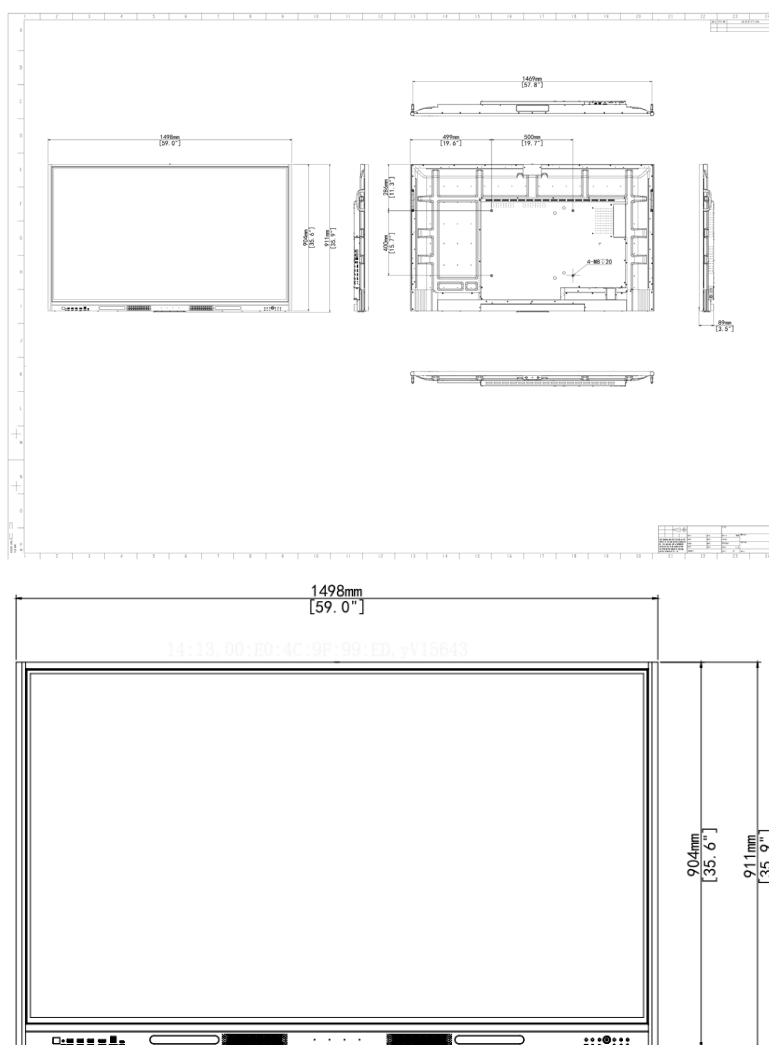
Specifications

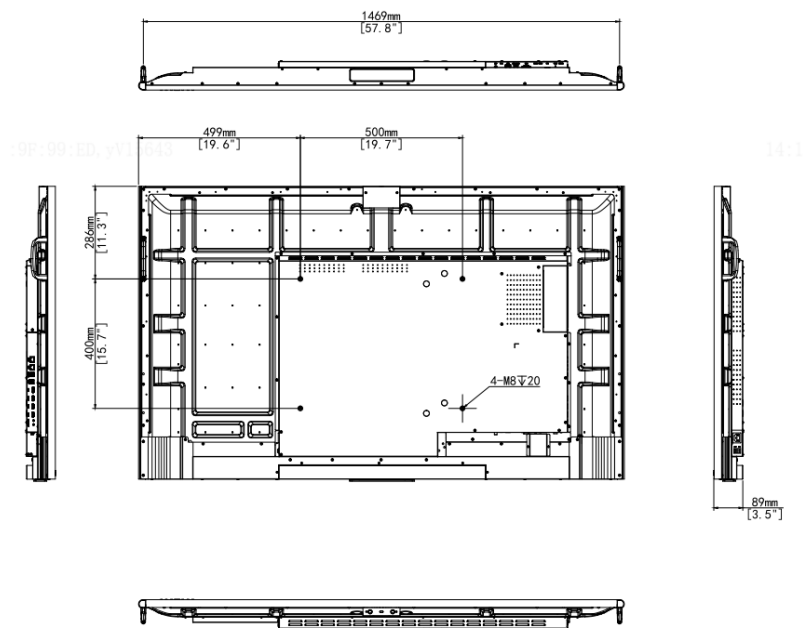
Panel	Description
Backlight	DLED
Panel Size	65"
Resolution	3840 x 2160
Brightness (cd/m ²)	350
Contrast Ratio	1200 : 1
Response Time (ms)	8
Viewing Angle (H/V)	178°/178°
Color Support	1.07 billion
Refresh rate (Hz)	60
Color gamut	72%
Lifespan	50000H
Haze Value	25%
Surface Hardness	9H (7 on the Mohs scale)
Display Size (mm)	1428.48 x 803.52
Pixel Pitch (H x V) (mm)	0.37 x 0.37
Touch	Description
Touch Control	Contactless IR sensor, supports 50-point touch, 20-point write
Touch Precision (mm)	± 1
Recognizable Object	10 points, 2mm
Glass	4mm tempered glass, 7H (Mohs), anti-glare
Touch Response Time (ms)	≤ 2
Touchscreen Input	Opaque objects (e.g. fingers, pens)
Touch technology	Infrared touch
System	Description
CPU Frequency	2.4GHz
CPU	RK3588: 4 x Cortex-A76 based 2.4 GHz + 4 x Cortex-A55 based 1.8 GHz
RAM/ROM	DDR4: 8GB, eMMC: 128GB
Android Version	Android 13.0

Interface	Description
Video Input	3 x HDMI IN (4K), 1 x DP IN, 1 x VGA IN, 1 x YPbPr IN
Video Output	1 x DP OUT, 1 x HDMI OUT (4K)
Audio Input	1 x AUDIO IN
Audio Output	1 x EARPHONE, 1 x coaxial audio output interface (COAX)
Other Interfaces	1 x RS232, 3 x front USB 3.0, 4 x on-board USB 3.0, 2 x TOUCH USB, 2 x Type-C, 1 x TF CARD, 1 x IR IN
Network	1 x LAN OUT, 1 x LAN IN
Audio	Description
Speaker	Left channel 20W: 1 x treble (5W) + 1 x bass (15W) Right channel 20W: 1 x treble (5W) + 1 x bass (15W)
Wi-Fi	Description
Wi-Fi Configuration	Wi-Fi 5+Wi-Fi 6, supports 5 GHz/2.4 GHz
Wi-Fi Performance	30m ² coverage, 20m transmission distance in open space
Bluetooth	Description
Bluetooth Version	5.2
Bluetooth Performance	10m transmission distance in open space
OSD	Description
Multi-Language	26 (Simplified Chinese, Traditional Chinese, English, Japanese, Arabic, French, Spanish(ES-ES), Spanish(ES-MX), Portuguese(ES-ES), Portuguese(ES-MX), Portuguese, German, Italian, Dutch, Polish, Korean, Catalan, Galician, Vietnamese, Bulgarian, Kazakh, Russian, Ukrainian, Thai, Uzbek, Hungarian, Croatian)
VESA	Description
Wall Mount Hole (mm)	500 x 400
Wall Mount Screw	4 x M8 screw hole
General	Description
Power Supply	AC 100 to 240 V, 50/60 Hz
Overall Power Consumption (W)	220 (without OPS)
Standby Power Consumption (W)	< 0.5
Product Dimensions (W x H x D) (mm)	1498 x 911 x 89
Package Dimensions (W x H x D) (mm)	1632 x 1081 x 222

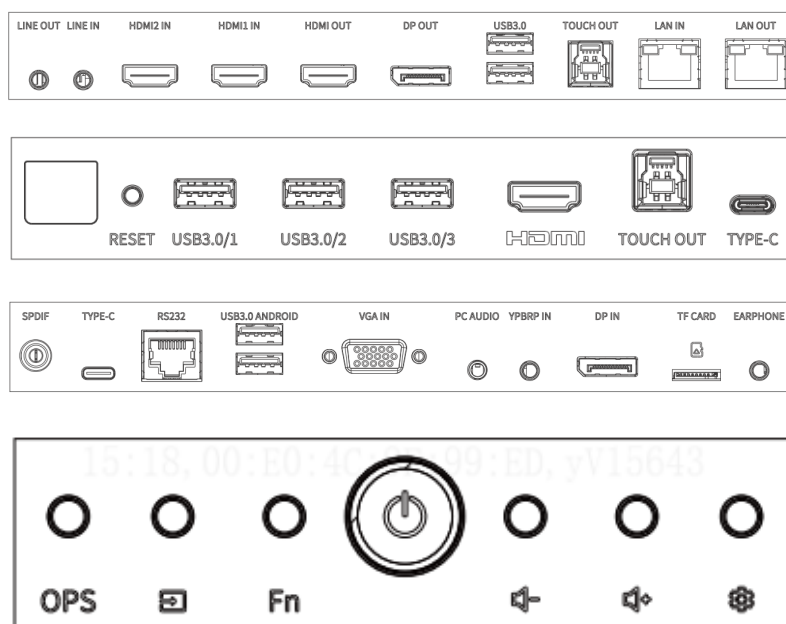
Operating Temperature	0°C to 50°C
Weight (Kg)	Net weight: 42 Gross weight: 46
Operating Humidity	10% to 90% RH (noncondensing)
Storage Temperature	-20°C to 60°C
Storage Humidity	0% to 95% RH (noncondensing)
Accessories Included	1 x power cable, 2 x stylus pen, 1 x quick guide, 1 x wall mounting bracket, 1 x IR remote control
Certification	Description
Certification	Energy Star, CE LVD, CB, ERP, CE EMC, FCC, UKCA LVD, UKCA EMC, RCM

Dimensions





Interface



Ordering Information for Optional Accessories

Model	Remarks
MW3565-U-CE	65-Inch Smart Interactive Display
HB-7199-TP	Wireless Screen Sharing Dongle
HB-4365	65 to 86-Inch Smart Interactive Display Wall Mounting Bracket

HB-T-FMC	65 to 86-Inch Smart Interactive Display Mobile Stand
HB-7099-M	Pluggable PC module with i5 processor (Windows 10, not activated)
HB-7099-S	Pluggable PC module with i7 processor (Windows 10, not activated)
LIS-WIN10-V	OS-Windows 10-1-to-1 License-IoT Enterprise Value (with i5 processor OPS module)
LIS-WIN10-H	OS-Windows 10-1-to-1 License-IoT Enterprise High End (with i7 processor OPS module)

Ordering Info

Product Model	Description
MW3565-U-CE	65" Smart Interactive Display

Zhejiang Uniview Technologies Co., Ltd.

No. 369, Xietong Road, Xixing Sub-district, Binjiang District, Hangzhou City, 310051, Zhejiang Province, China

Email: overseasbusiness@uniview.com; globalsupport@uniview.com

<http://www.uniview.com>

©2023-2024 Zhejiang Uniview Technologies Co., Ltd. All rights reserved.

*Product specifications and availability are subject to change without notice.

*Despite our best efforts, technical or typographical errors may exist in this document. Uniview cannot be held responsible for any such errors and reserves the right to change the contents of this document without prior notice.